

PORTFOLIO

BY
CARLO ALOISIO
PRODUCTION
DESIGNER

Web-site
www.carloaloisio.com

mobile
+39 347 6008313

mail
carloaloisio@yahoo.it



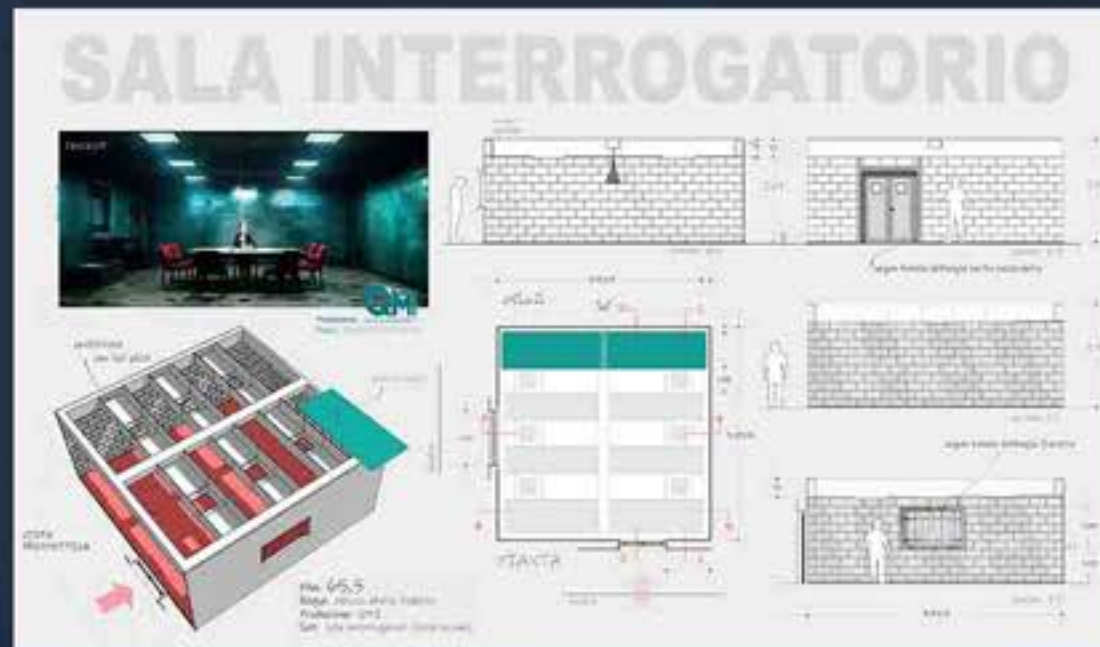
My name is CARLO ALOISIO, I am a Production Designer, born in Rome on March 26, 1976. Since 1998, after completing my artistic studies, I began my career in the film industry as an assistant at the studio of production designer Giantito Burchiellaro, working on various film and television productions. Alongside numerous top-level production designers,, I had the honor of collaborating with Academy Award winner Dante Ferretti, starting in 2012 with "Seventh Son" directed by Sergei Bodrov, followed by "Cinderella" directed by Kenneth Branagh, and then working on the documentary film "The Unsinkable Henry". Finally, I collaborated on two opera productions, "La Traviata" and "Simon Boccanegra". In addition, I am proud to have worked as Art Director on numerous national and international films, including the prestigious film "Conclave" directed by Edward Berger. This experience has allowed me to receive recognition, including the esteemed "2025 Winner Excellence in Production Design Award Contemporary Film". Since 2017, I began my path as a Set Designer, signing my first projects: "Non Odiare" "Quasi Orfano" "The Net" "Un matrimonio mostruoso" "Prisma" "Nudes" "In fuga con Babbo Natale" "Faisbum" "Safe" "La Pagella". My passion for set design combines with my curiosity, and my approach to work is both traditional and innovative. In fact, I have integrated artificial intelligence software into my artistic background, which allows me to create concepts and projects that are increasingly visionary and realistic.

concept



Director:
ALESSIO M.ARIA FEDERICI
Production:
QMI
Production designer:
CARLO ALOISIO

Environment:
construction in
LOCATION/STAGE

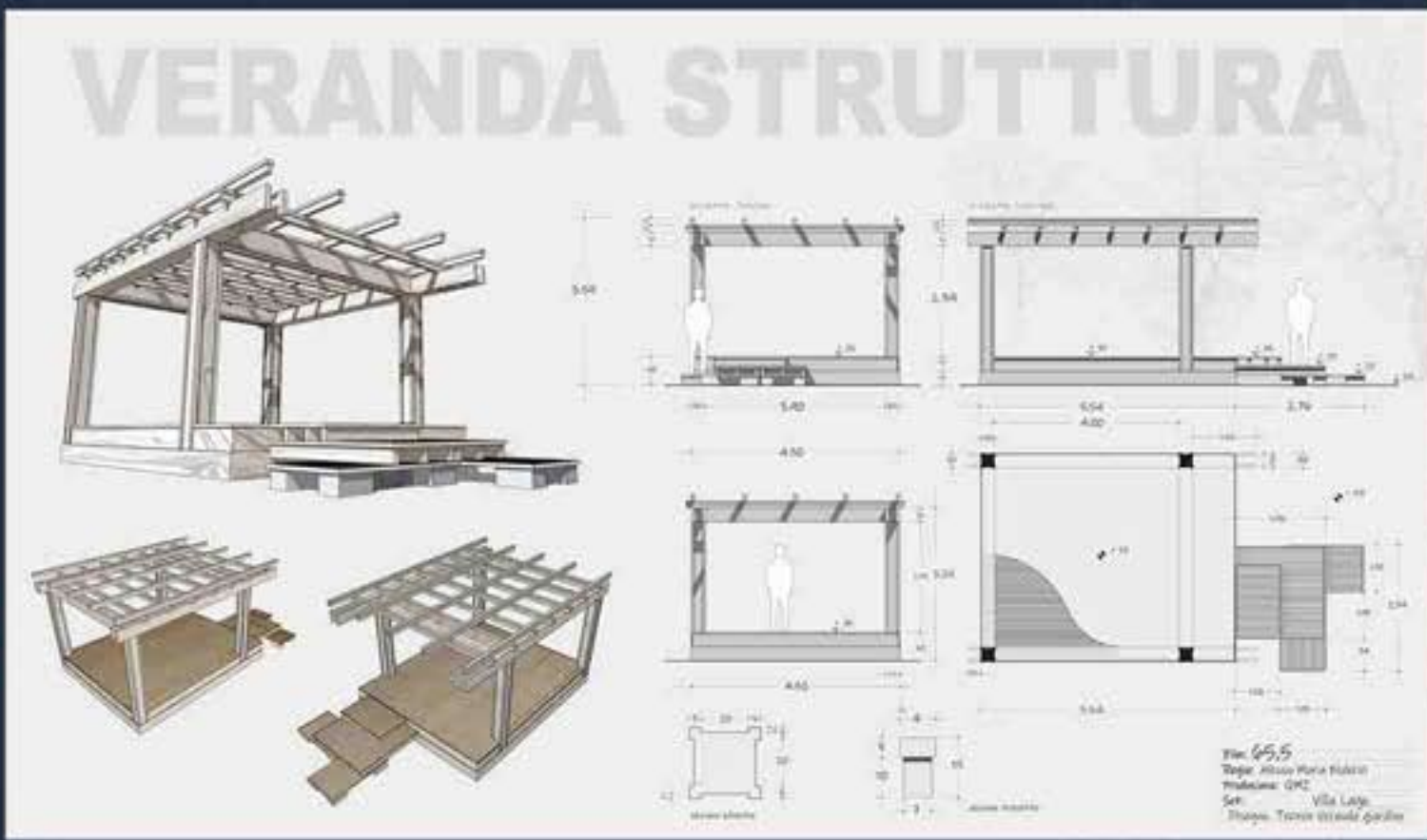


concept



Director:
ALESSIO MARIA FEDERICI
Production:
QMI
Production designer:
CARLO ALOISIO

Environment:
construction in
LOCATION/STAGE



concept



Director :
VOLFANGO DE BIASE
Production:
COLORADO
Production designer:
CARLO ALOISIO

Environment:
STAGE De Paolis studios



concept

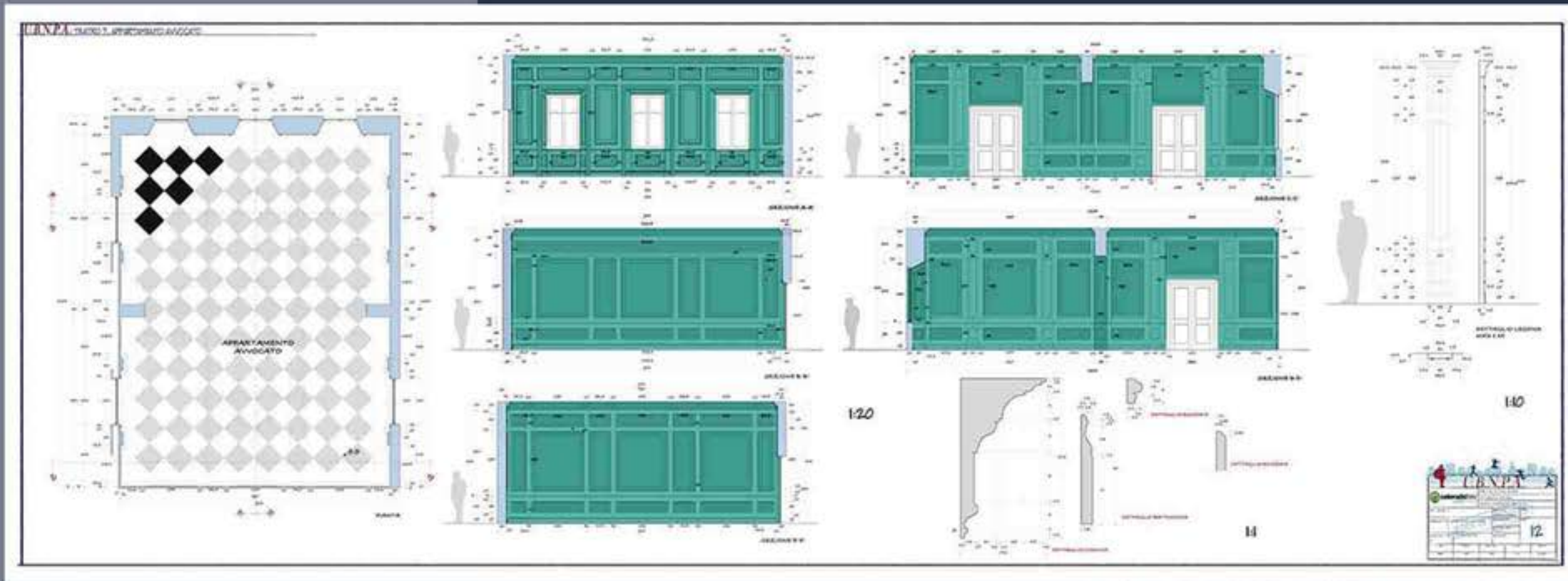


Director :
VOLFANGO DE BIASE
Production:
COLORADO
Production designer:
CARLO ALOISIO

Environment:
STAGE De Paolis studios



DWG

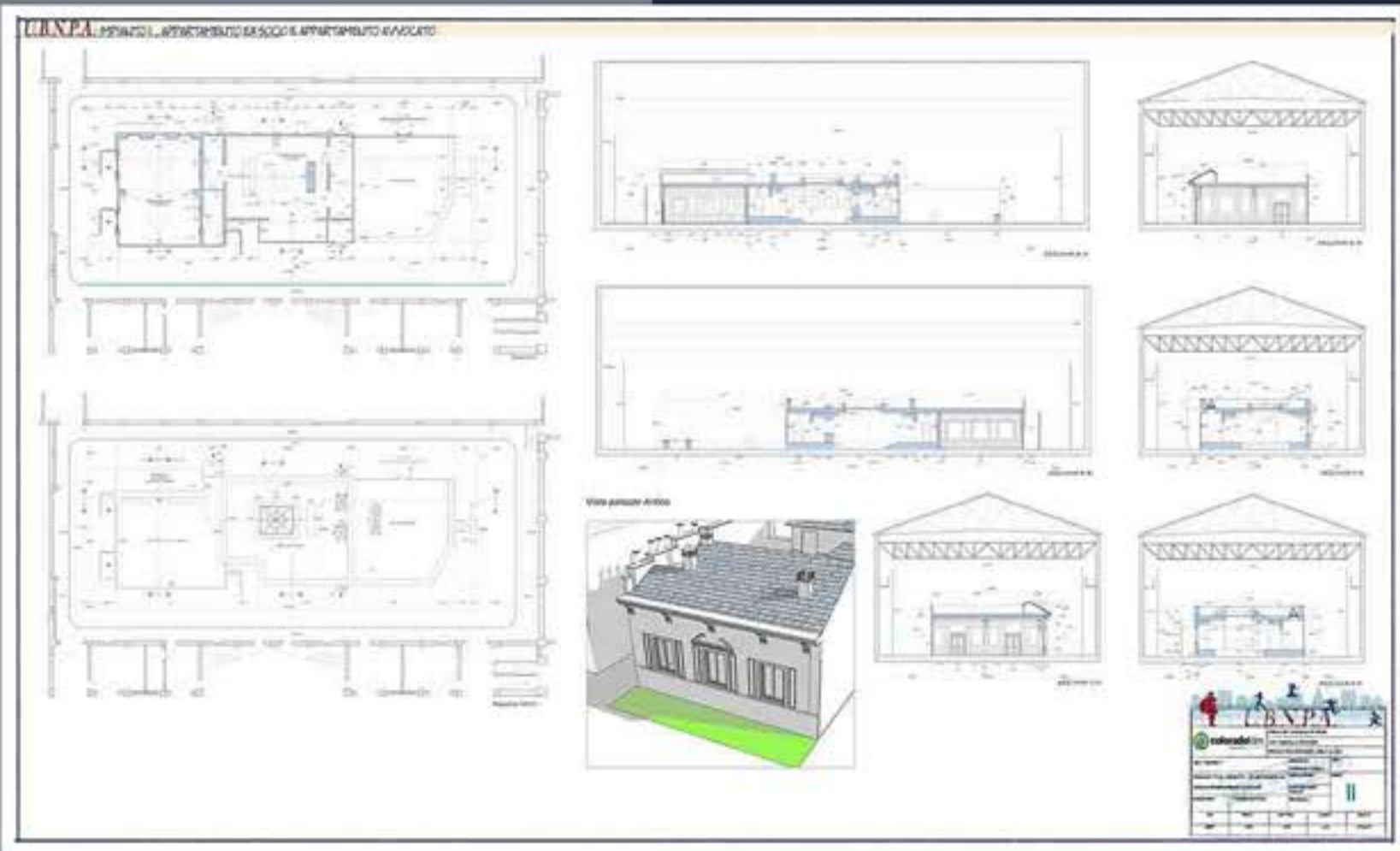


Director :
VOLFANGO DE BIASE
Production:
COLORADO
Production designer:
CARLO ALOISIO

Environment:
STAGE De Paolis studios



DWG



Director :
VOLFANGO DE BIASE
Production:
COLORADO
Production designer:
CARLO ALOISIO

Environment:
STAGE De Paolis studios



concept



Director:
VOLFANGO DE BIASE
Production:
CROSS productions
Production designer:
CARLO ALOISIO

Environment:
construction in
LOCATION



concept



Director:
VOLFANGO DE BIASE
Production:
CROSS productions
Production designer:
CARLO ALOISIO

Environment:
construction in
LOCATION



concept



Director:
VOLFANGO DE BIASE
Production:
CROSS productions
Production designer:
CARLO ALOISIO

Environment:
construction in
LOCATION



concept

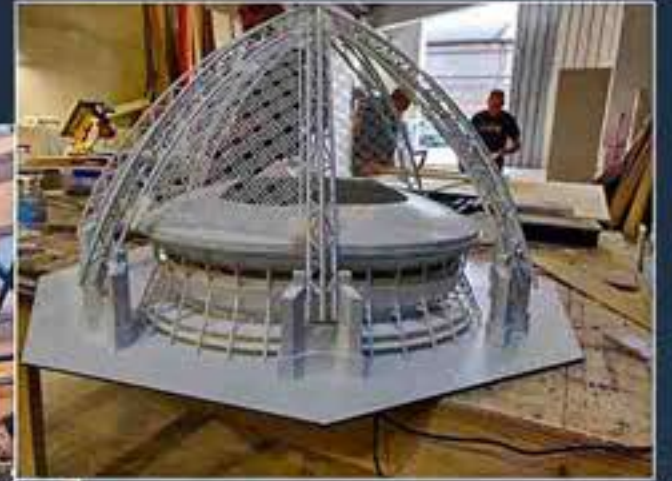


Director:
VOLFANGO DE BIASE
Production:
CROSS productions
Production designer:
CARLO ALOISIO

Environment:
construction in
LOCATION



PLASTICO STADIO



Director:
VOLFANGO DE BIASE
Production:
CROSS productions
Production designer:
CARLO ALOISIO

Environment:
construction in
LOCATION



concept



Director:
UMBERTO CARTENI
Production:
RODEO DRIVE
Production designer:
CARLO ALOISIO

Environment:
LOCATION



concept

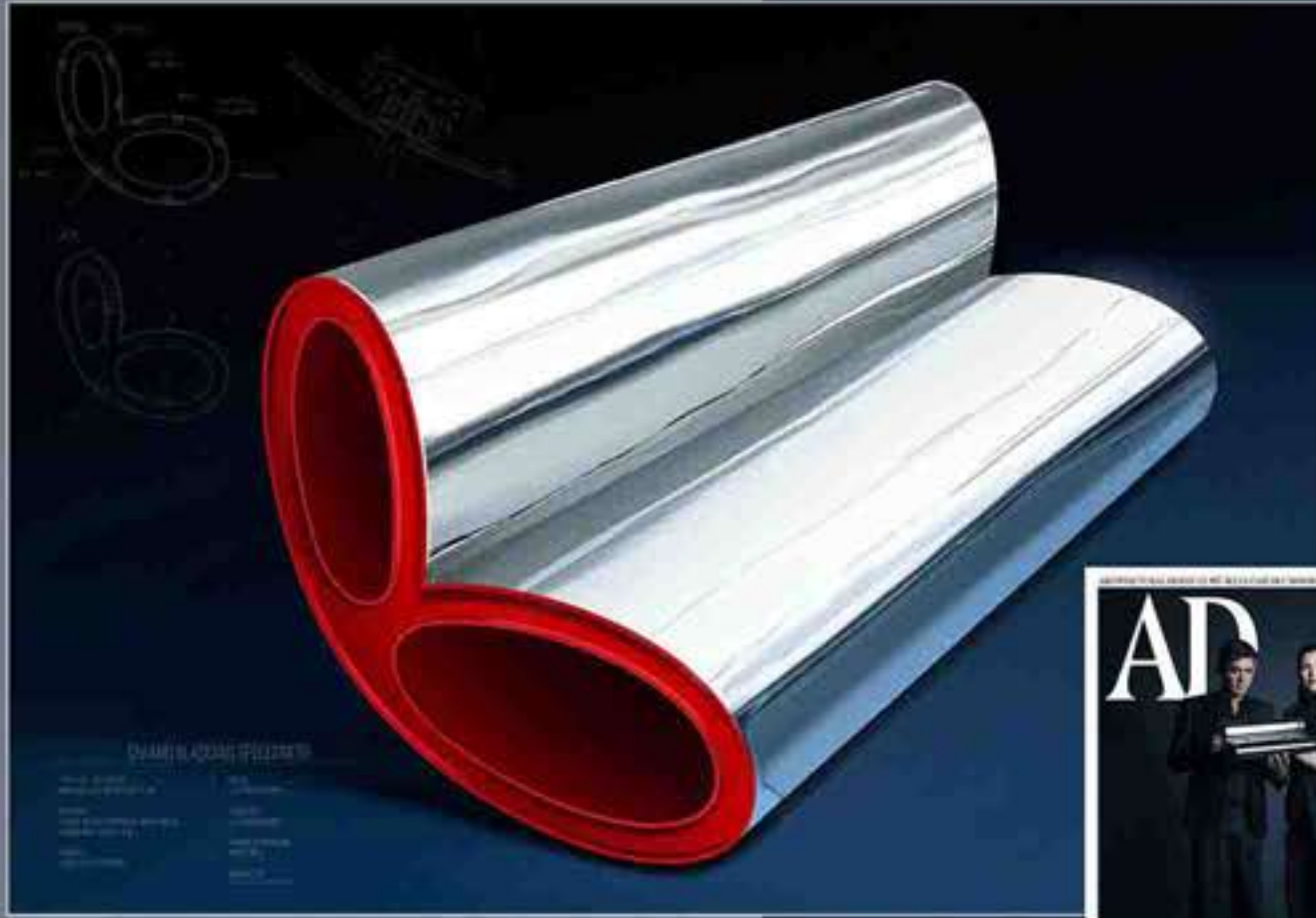


Director:
UMBERTO CARTENI
Production:
RODEO DRIVE
Production designer:
CARLO ALOISIO

Environment:
construction in
LOCATION



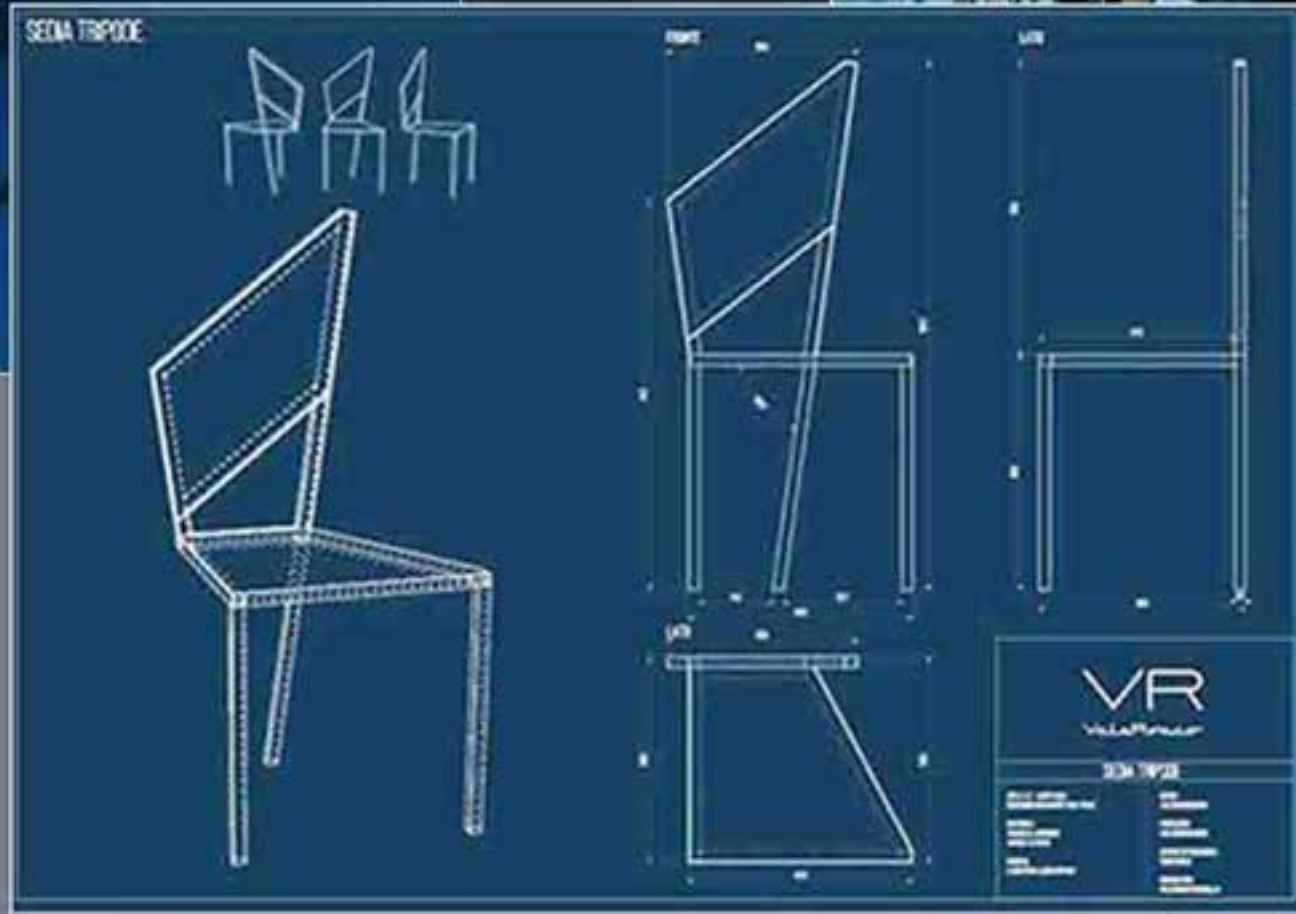
concept



Director:
UMBERTO CARTENI
Production:
RODEO DRIVE
Production designer:
CARLO ALOISIO

Environment:
construction in
LOCATION

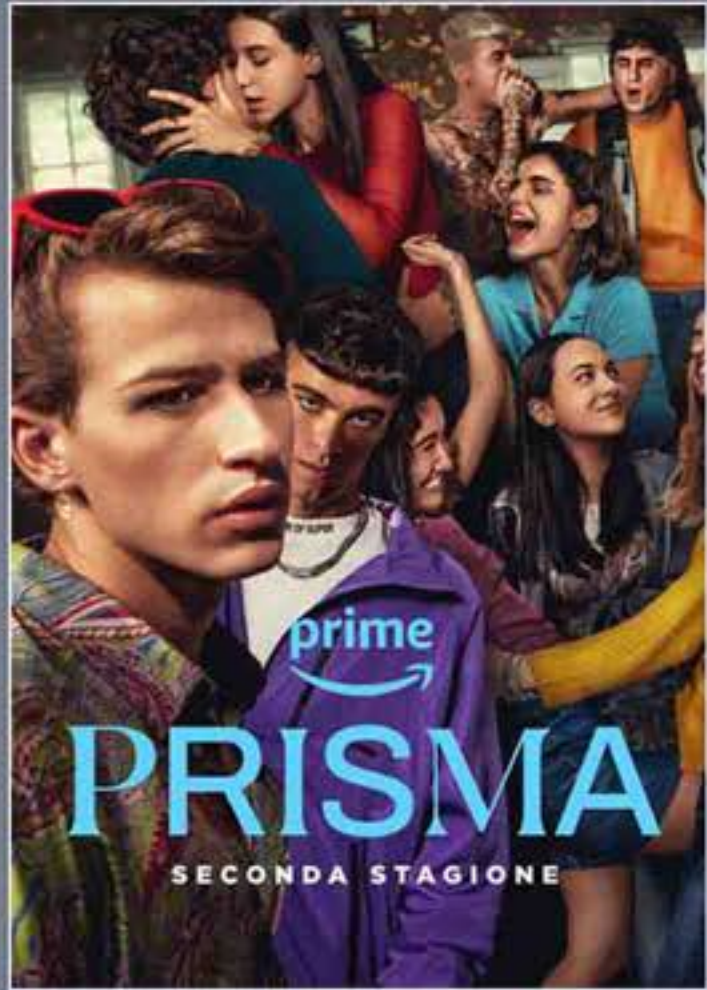
concept



Director:
UMBERTO CARTENI
Production:
RODEO DRIVE
Production designer:
CARLO ALOISIO

Environment:
construction in
LOCATION

concept



Director:
LUDOVICO BESSEGATO
Production:
CROSS production
Production designer:
CARLO ALOISIO

Environment:
construction in
LOCATION



3d model

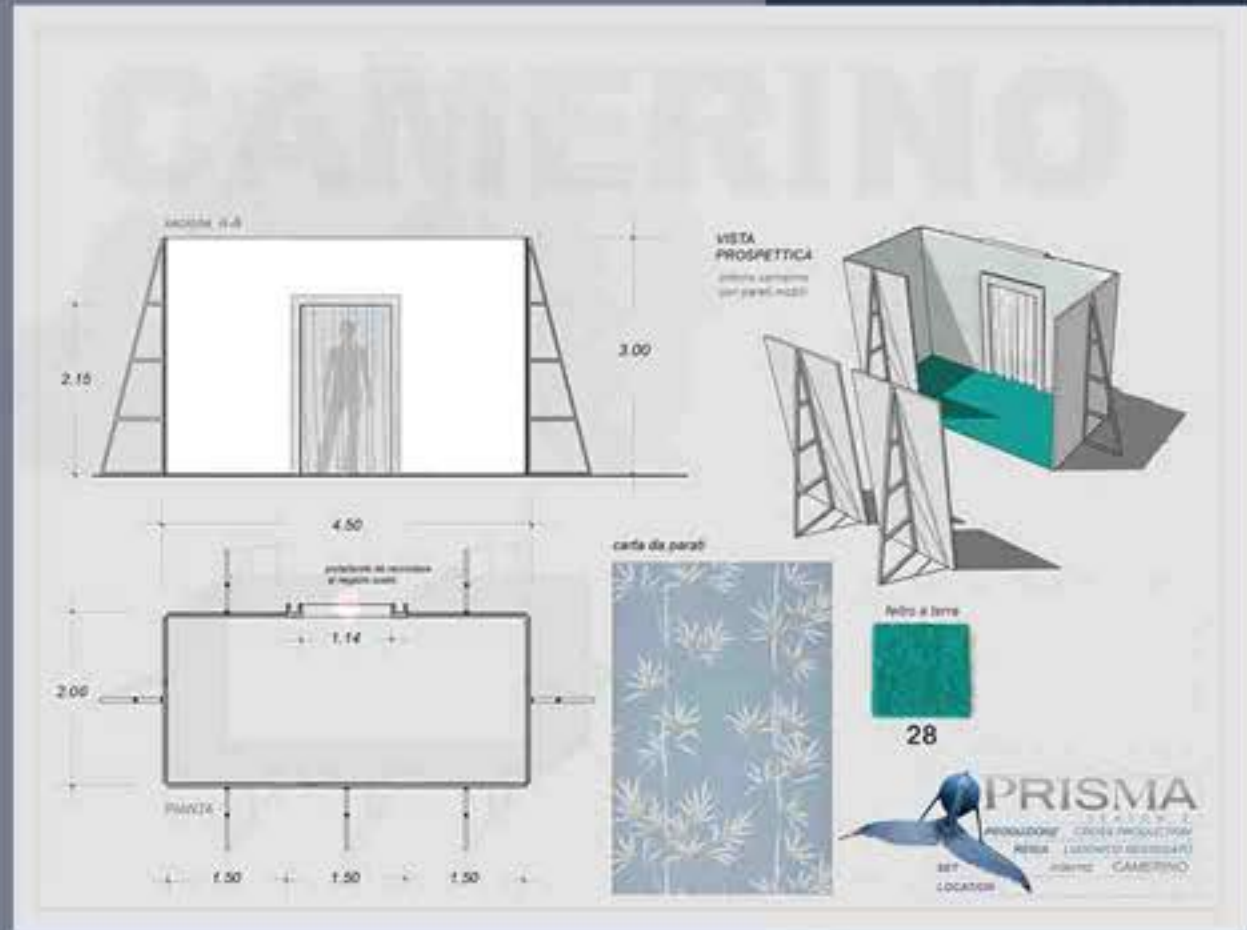


Director:
LUDOVICO BESSEGATO
Production:
CROSS production
Production designer:
CARLO ALOISIO

Environment:
construction in
LOCATION



DWG

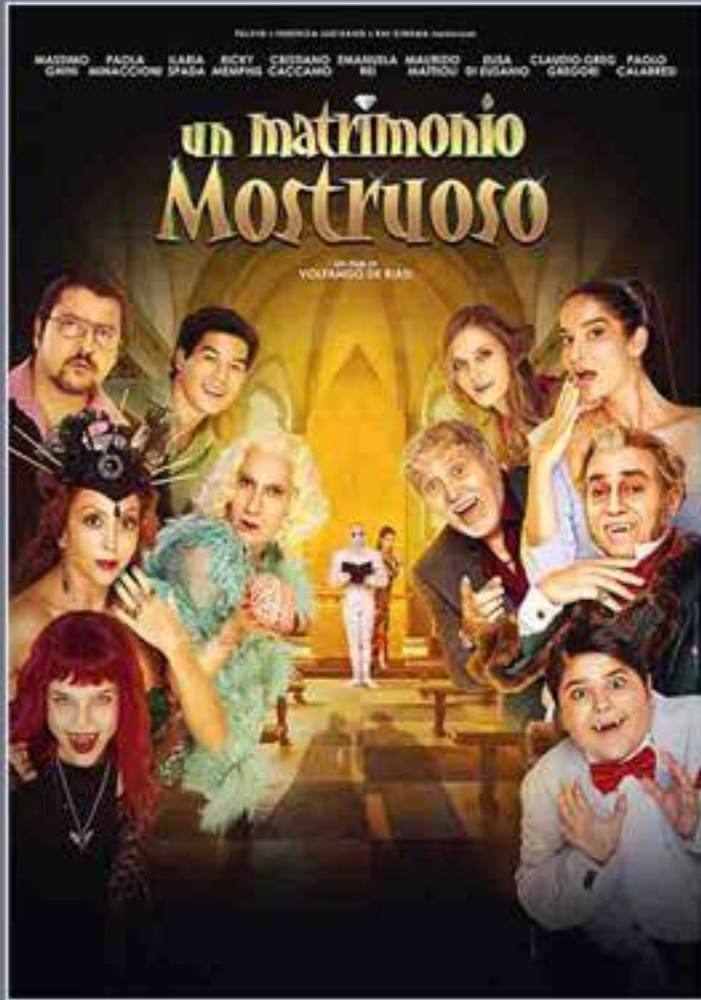


Director:
LUDOVICO BESSEGATO
Production:
CROSS production
Production designer:
CARLO ALOISIO

Environment:
construction in
LOCATION



concept



Director:
VOLFRANGO DE BIASE
Production:
IIF
Production designer:
CARLO ALOISIO

Environment:
construction in
LOCATION



concept



Director:
VOLFANGO DE BIASE
Production:
IIF
Production designer:
CARLO ALOISIO

Environment:
construction in
LOCATION



concept



Director:
MAURO MANCINI
Production:
MOVIMENTO
Production designer:
CARLO ALOISIO

Environment:
construction in
LOCATION



concept



Director:
MAURO MANCINI
Production:
MOVIMENTO
Production designer:
CARLO ALOISIO

Environment:
construction in
LOCATION



concept



Director:
MAURO MANCINI
Production:
MOVIMENTO
Production designer:
CARLO ALOISIO

Environment:
construction in
LOCATION



concept



Director:
LAURA LUCHETTI
Production:
BIM
Production designer:
CARLO ALOISIO

Environment:
construction in
LOCATION



concept



Director:
LAURA LUCHETTI
Production:
BIM
Production designer:
CARLO ALOISIO



Environment:
construction in
LOCATION

concept



Director:
LAURA LUCHETTI
Production:
BIM
Production designer:
CARLO ALOISIO

Environment:
construction in
LOCATION



concept

SAFE.

Commercial for
the
Baseball World
Championship

Director:
MAURO MANCINI
Production:
WW production
Production designer:
CARLO ALOISIO

Environment:
construction in
LOCATION



concept



Director:
MAURO MANCINI
Production:
FULL MOON
Production designer:
CARLO ALOISIO

Environment:
construction in
LOCATION



PROJECT as

ART DIRECTOR

ASSISTANT PRODUCTION DESIGNER

MODEL MAKER

concept



Director:
EDUARD BERGER
Production:
WILDSIDE-FREMANTLE
Production designer:
SUZIE DAVIS
Art-director
CARLO ALOISIO
Environment:
construction in
CINECITTA' STAGE



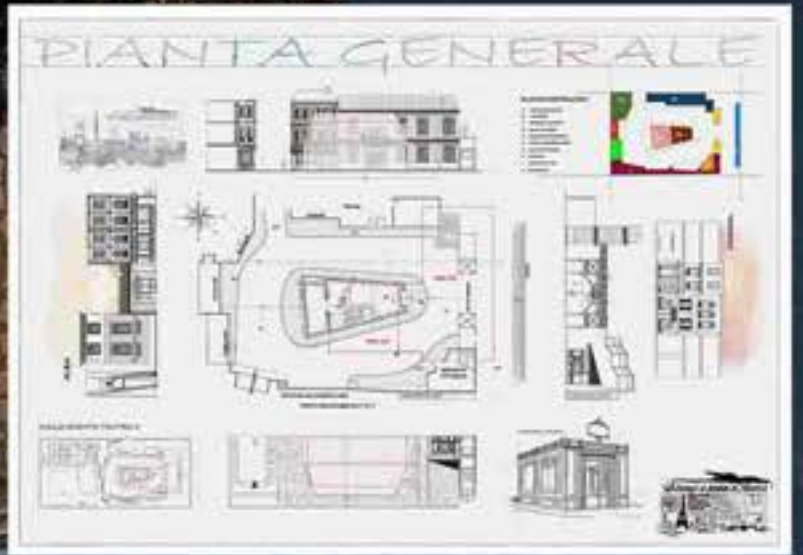
concept



Director:
SERGIO CASTELLITTO
Production:
RODEO DRIVE
Production designer:
M. STURIALE
Art-director
CARLO ALOISIO
Environment:
construction in
CINECITTA' STAGE



DWG

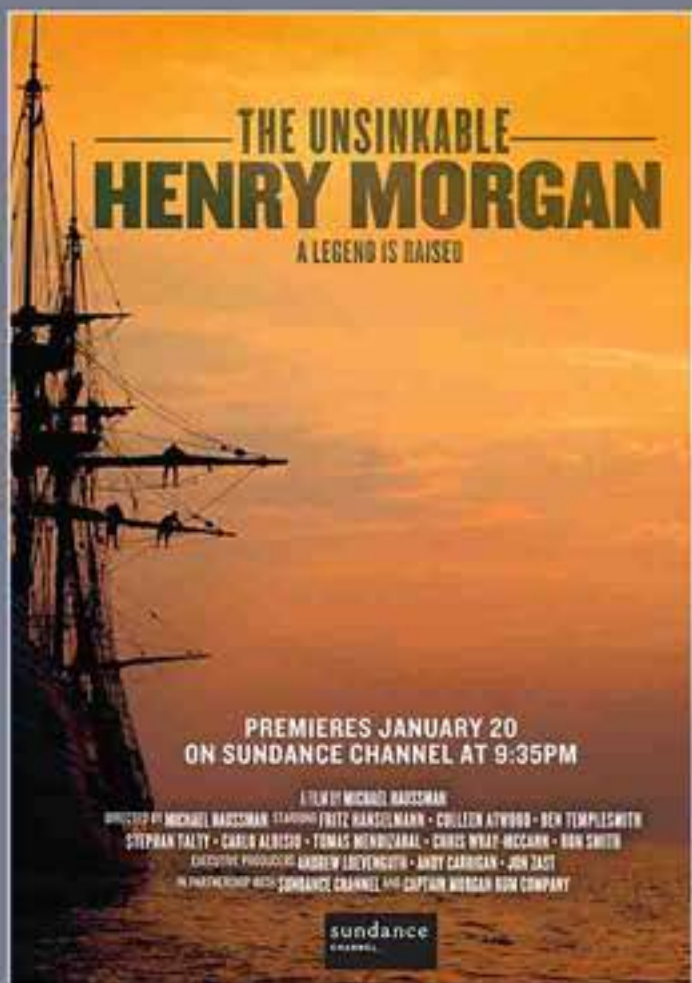


concept

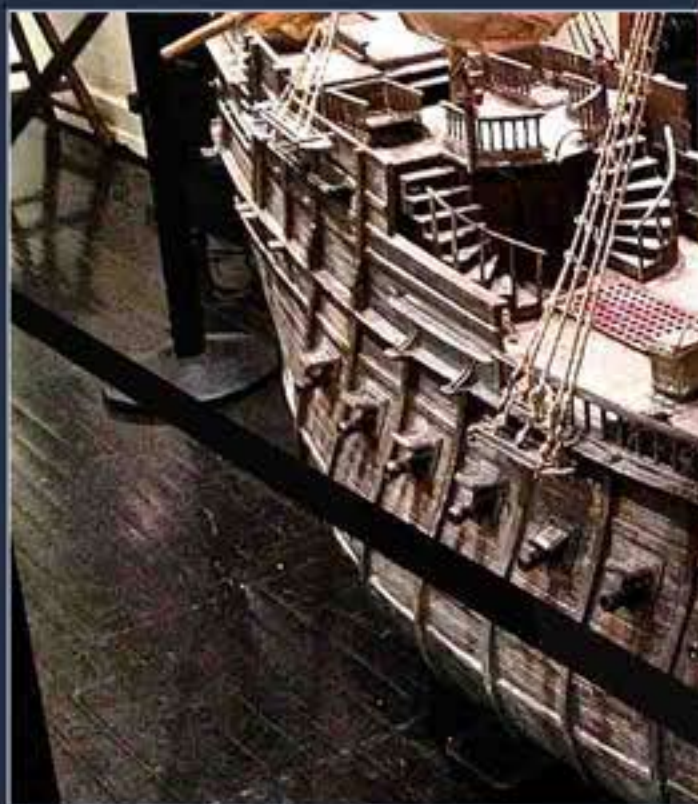


Director:
RANDI-SILVESTRINI-FERRI
Production:
FABULA pictures
Production designer:
PAOLO BONFINI
Art-director
CARLO ALOISIO
Environment:
construction in
LOCATION





Director:
MICHAEL HAUSSMAN
Production:
PERSON FILMS
Production designer:
DANTE FERRETTI
Art-director
CARLO ALOISIO
Environment:
construction in
FERRETTI' STUDIOS



models



Director:
KENNETH BRANAGH
Production:
WALT DISNEY PICTURES
Production designer:
DANTE FERRETTI
Art-director
CARLO ALOISIO
Environment:
construction in
LONDON studios



models



Director:
SERGEI BODROV
Production:
LEGGENDARY
Production designer:
DANTE FERRETTI
Art-director
CARLO ALOISIO
Environment
construction in
VANCOUVER studios



concept



Director:
GABRIELE MAINETTI
Production:
GOON FILMS
Production designer:
M:STURIALE
Assistant production designer
CARLO ALOISIO
Environment:
construction in
LOCATION/CINECITTA'



concept

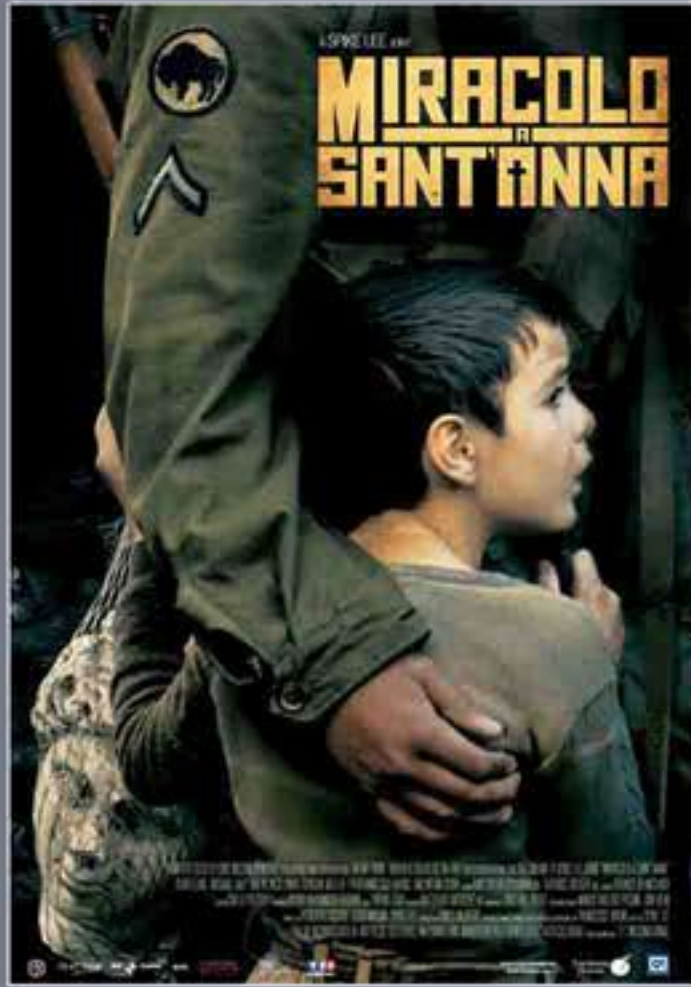


concept

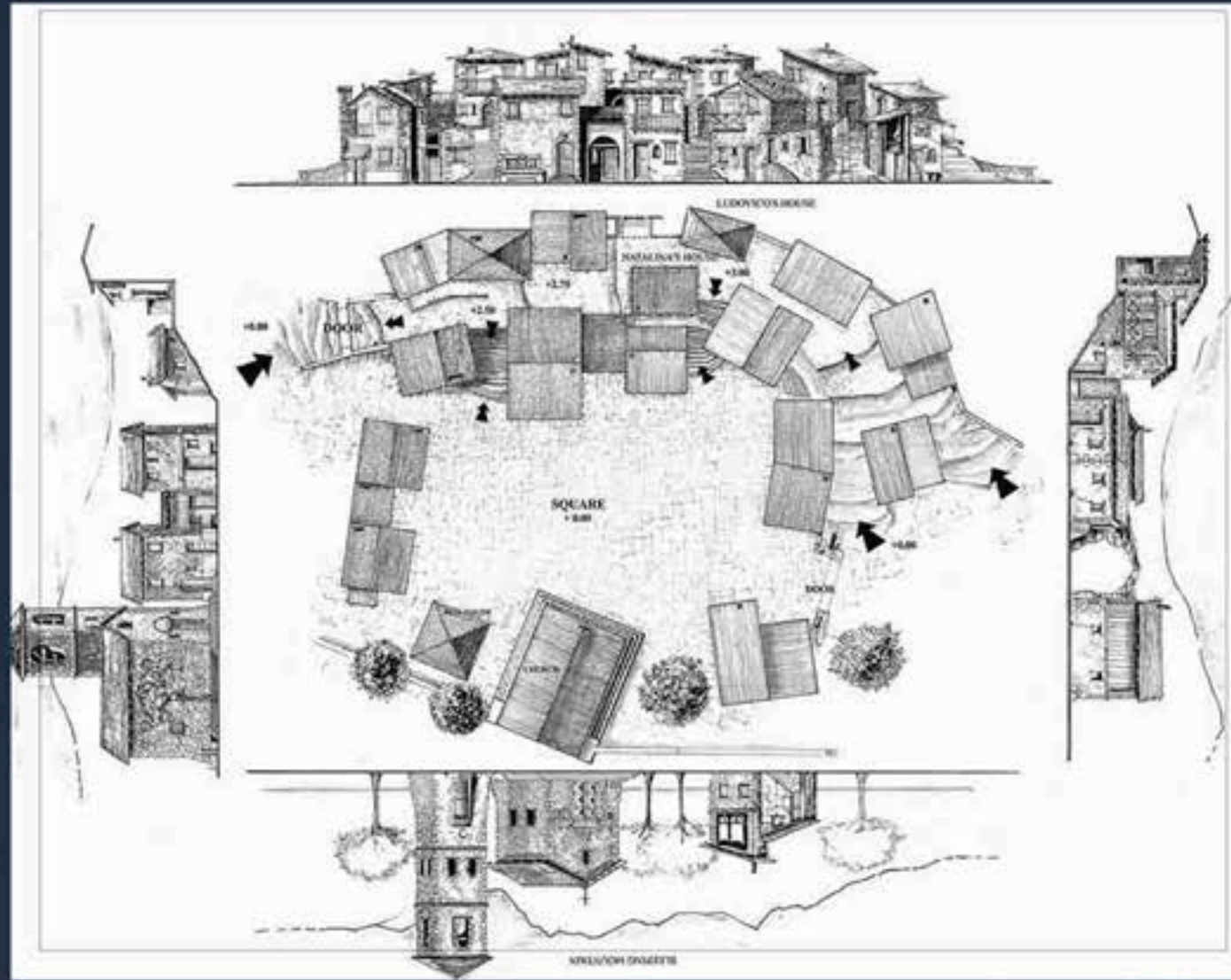


Director:
GABRIELE MAINETTI
Production:
GOON FILMS
Production designer:
M. STURIALE
Concept Artist
CARLO ALOISIO
Environment:
construction in
LOCATION/CINECITTA'

concept



Director:
SPIKE LEE
Production:
PANORAMA
Production designer:
TONINO ZERA
Assistant production designer
CARLO ALOISIO
Environment:
construction in
LOCATION/CINECITTA'



concept



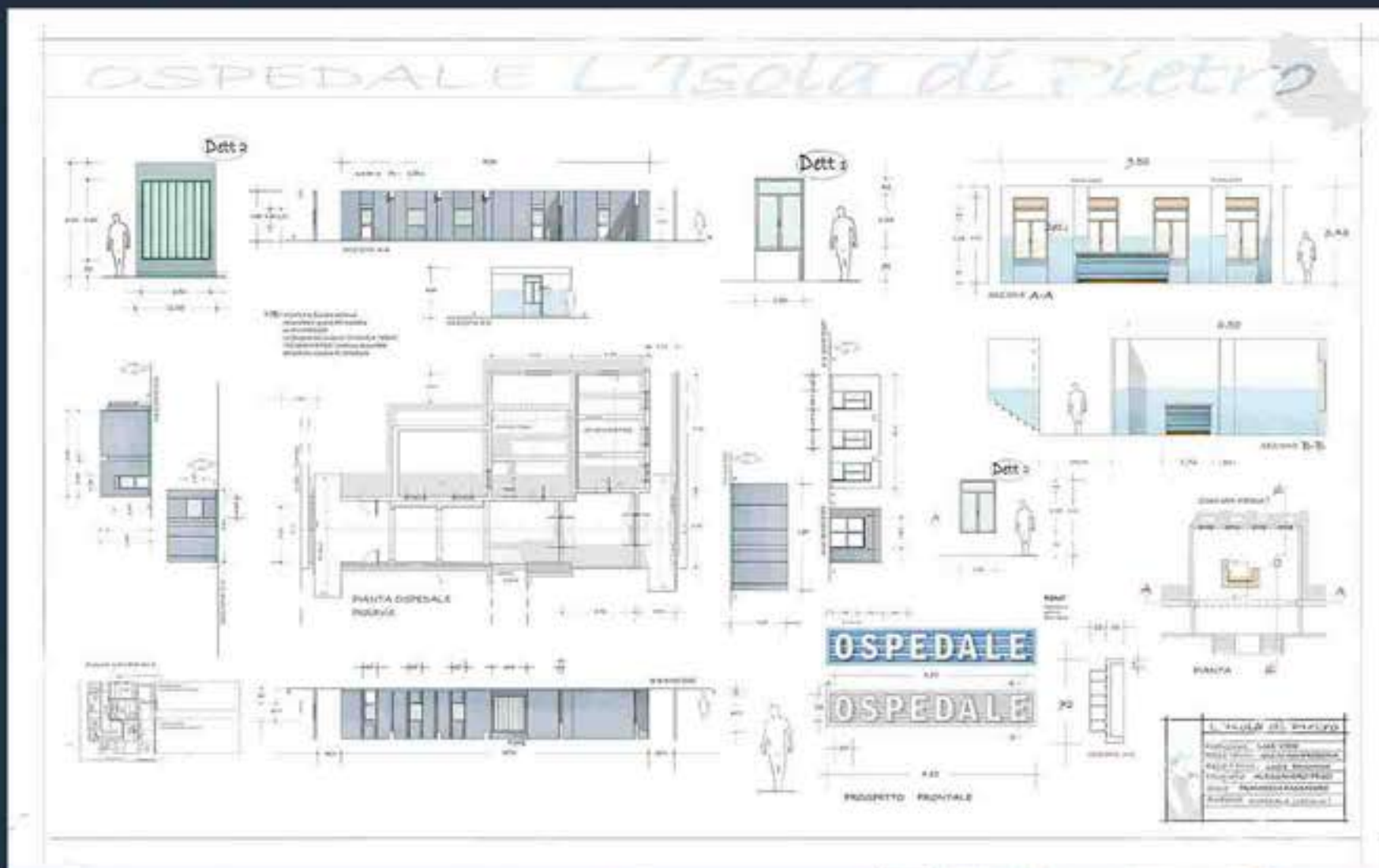
Director:
MICHELE SOAVI
Production:
CROSS production
Production designer:
FRANCESCA PASSADORE
Assistant production designer
CARLO ALOISIO
Environment:
construction in
LOCATION/VIDEA



DWG



Director:
BRIGNONE MANFREDONIA
Production:
LUX vide
Production designer:
FRANCESCA PASSADORE
Assistant production designer
CARLO ALOISIO
Environment:
construction in
LOCATION/LUX studios



concept



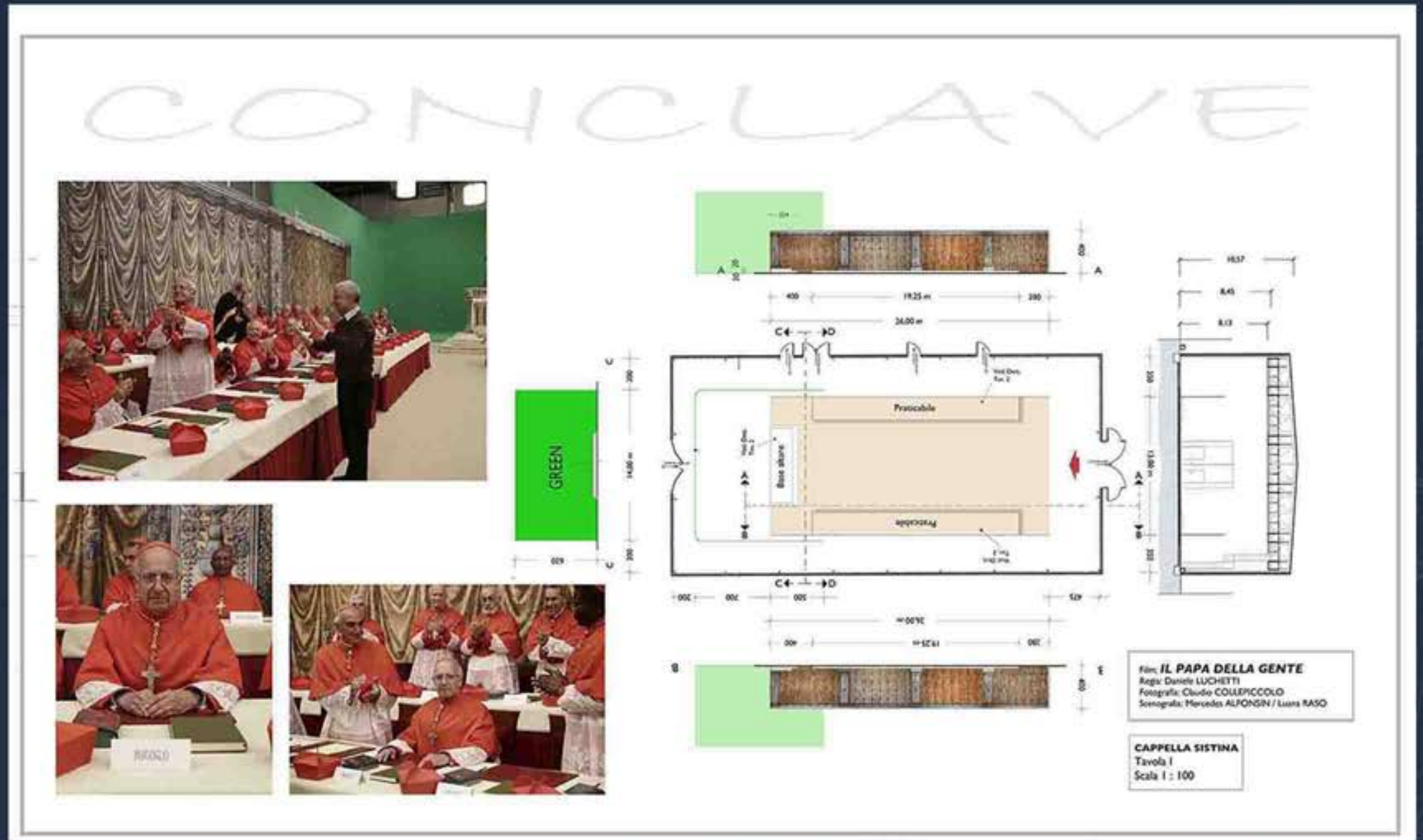
Director:
GIANNI ZANASI
Production:
PUPKIN production
Production designer:
M. STURIALE
Assistant production designer
CARLO ALOISIO
Environment:
construction in
LOCATION



concept



Director:
DANIELE LUCHETTI
Production:
TAODUE
Production designer:
MERCEDES ALFONSIN
Assistant production designer
CARLO ALOISIO
Environment:
construction in
LOCATION/CINECITTA'



models



Director:
ERMANNOLMI
Production:
PANORAMA
Production designer:
LUIGI MARCHIONE
Model maker
CARLO ALOISIO
Environment
construction in
LOCATION/MONTENEGRO

